



Clean Cities and
Communities



AK POWER SOLUTIONS
ACCELERATING ELECTRIFICATION



Innovative EV Charging Solutions

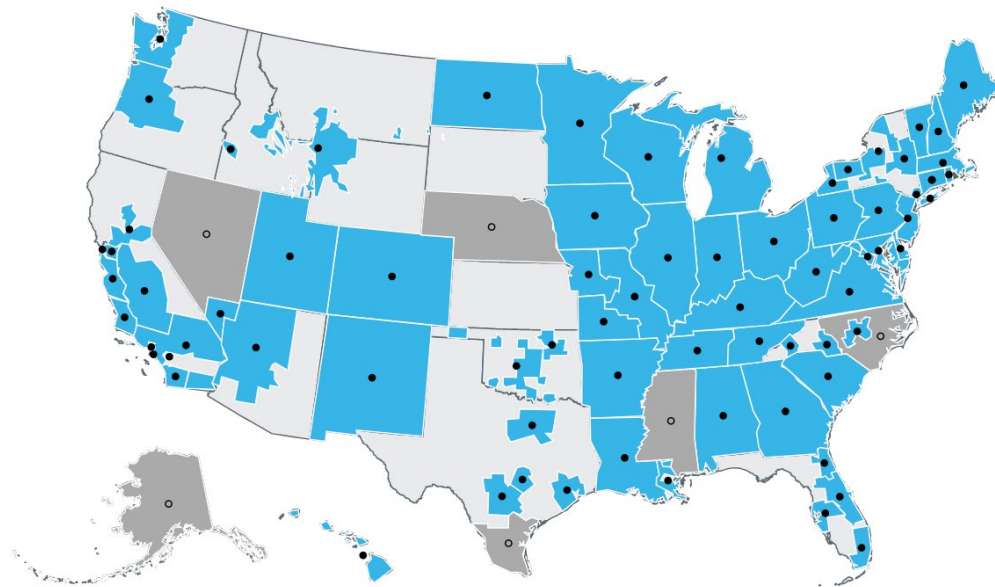
July 24, 2025

Agenda

- 10:00am – 10:05am: Welcome & Introduction
- 10:05am – 10:20am: Beam
- 10:20am – 10:35am: XCharge
- 10:35am – 10:50am: AK Power Solutions
- 10:50am – 11:00am: Q&A

Clean Cities and Communities Coalition Network

Advancing affordable, domestic transportation technologies



Clean Cities and
Communities

■ DOE-Designated Coalitions

■ DOE-Designated Apprentice Coalitions

Map Date: 4/1/24

- Forums for local stakeholders to connect and collaborate
- Provide grassroots support and resources
- Identify equitable, cost-effective solutions that work locally



Clean Cities and Communities



Strategically Advance Clean Transportation

Access technical assistance and hands-on problem-solving support.



**Connect to unbiased,
data-driven tools and
resources**



Build partnerships



**Receive personalized
experience rooted in
local context**



**Collaborate on funding
opportunities**



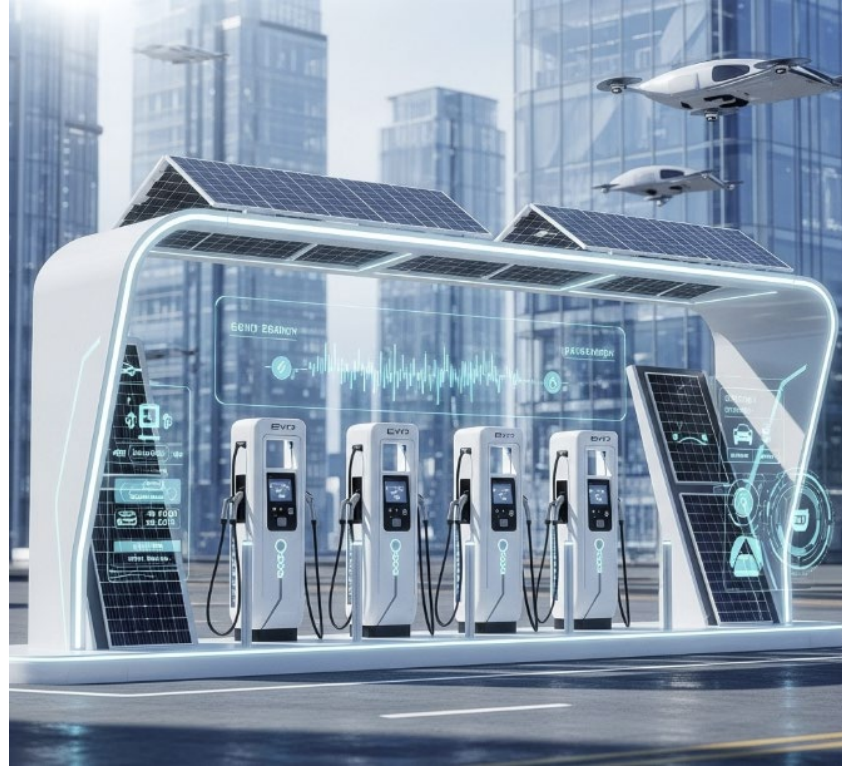
BEAM



“Innovative EV Charging Solutions”

Pat White
Business Development
Beam Global

The Future of EV Charging Looks Like...



Charging Infrastructure Innovation Focused On...

- Rapid deployment
- Charger location independence
- Relocate and repurpose
- Renewable energy
- Energy resilience



EV Charging Deployed in Minutes not Months



No Permitting



No Construction



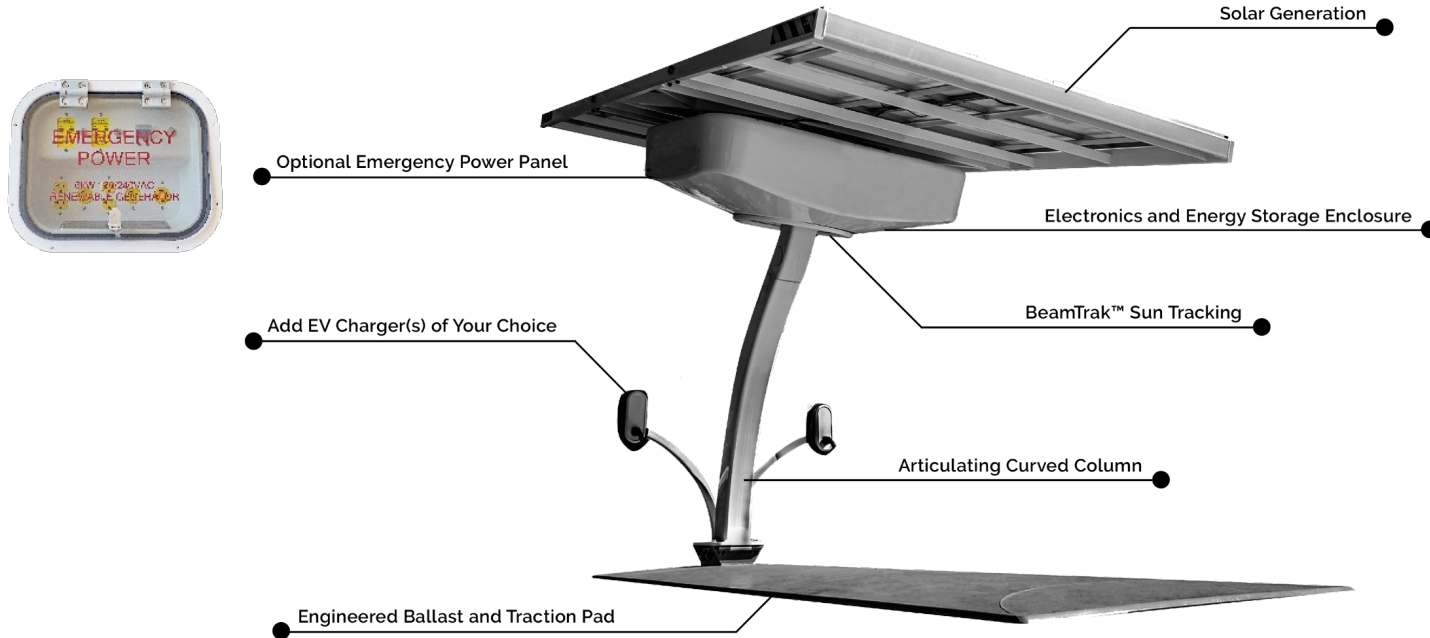
No Electrical Work

100% Renewable Energy...No Utility Bill!



EV ARC™

Off grid, solar EV charging infrastructure when and where it's needed



Rapid Deployment and Relocation

- Deployed and charging onsite in < 1 hour
- Relocate with forklift and/or trailer
- Purpose built ARC Mobility™ Trailer
- Maximize asset utilization
- Ideal for leased properties



Off-Grid Emergency Power

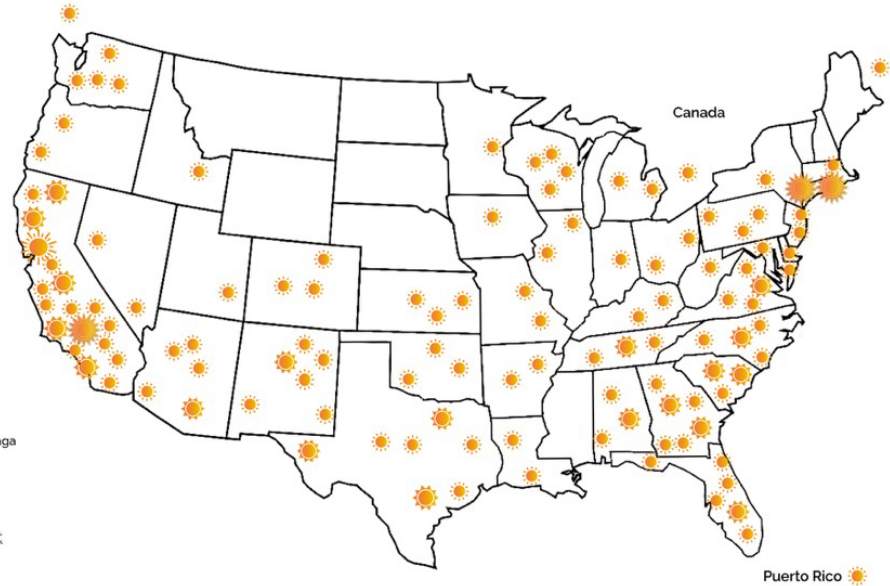
- Rapidly deployable, battery-based “generator”
- Charge during utility outages and weather events
- Wind-rated up to 160 mph
- Flood-proof up to 9.5 feet
- 100% solar generated power



Beam Global EV ARC™ systems continue to provide essential power during hurricane Helene

2,000+ Beam Global EV Charging Products Deployed

- Municipalities
- State Agencies
- Federal Government
- Fleet Operators
- Workplace Charging
- Public Charging
- Businesses
- Military



Copyright© 2023 Beam Global. All Rights Reserved - 09/06/2023





Drive on Sunshine

Pat White
Business Development
Beam Global
pat.white@beamforall.com
+1 720-507-4520

www.BeamForAll.com

BeamBike™

Solar-Powered eBike Charging station
deployed in minutes.

- Secure location to park, lock and charge 12 eBikes
- No Construction, No electrical connection
- Onboard battery storage
- No utility bills
- Transportable so can be relocated as eBike charging patterns emerge and change



NASDAQ: BEEM



Company Snapshot



Sustainable technology innovation company.



276 employees globally, headquartered in San Diego, CA with operations in Chicago, IL, Belgrade and Kraljevo, Serbia.



Made-in-America, patented products for the electrification of transportation, energy resiliency and Smart Cities infrastructure.



Fastest deployed, most scalable, lowest TCO, most robust EV charging infrastructure products.



Beam is publicly traded on Nasdaq under the ticker BEEM. No debt. \$100M line of credit untapped.



XCharge



19121 Marketplace
Ave

Kyle, TX 78640

XCharge at a Glance

Global leader in providing “one stop” smart charging + energy storage solutions

- ✓ Leadership in EV charging + Energy storage solution + SaaS platform
- ✓ Pioneer solution to address huge energy storage demand
- ✓ Highly visible and recurring revenue with strong growth trajectory and industry-leading profitability
- ✓ Established strong global presence⁽¹⁾
- ✓ Diversified blue-chip customer base
- ✓ Publicly Listed (XCH:Nasdaq)



Top 2
Market Share in EU⁽²⁾



40,000+
Chargers Sold to Date⁽³⁾



173%
Revenue YoY Growth⁽⁴⁾



One of the First
Bi-Directional Battery-Integrated Charger⁽⁵⁾



Profitable
For FY2023



25+
Countries with units in operation



XCHARGE HISTORY

- **Founded:** 2015
- **Headquarters:** Hamburg, Germany (Global HQ)
- **North American HQ:** Kyle, Texas
- XCharge was founded with the mission to provide **intelligent, efficient, and scalable EV charging infrastructure**, focusing on **DC fast charging**.
- We have deployed 40,000+ units globally
- Deployed in 25+ countries
- Deployed in 20 states

Product Portfolio

2018



Fast - charging
200 kW/300A

C6AM

2022



Balance grid load
Energy Storage

NZS

2023



High - power fast charging

400 KW, dual 500A,
with VPFC function

C7

2024



Bidirectional Battery -
integrated DCFC designed
for the North American Grid

300 KW, 60kW PV Input
with MPPT function

GridLink

C6AM Available in 208v or 480v

Robust design in compact footprint, less than 7 sq ft

15 inch touchscreen

Configurable for POS or NFC/RFID reader

Standalone charger design – no power cabinets or auxiliary devices needed, single point of connection

Flexible install for as little as 30kW up through 200kW

CCS1, CHAdeMO, NACS (Tesla) connectors available

LED charging indicator lights

Two connectors for simultaneous charging

10 year life on unit, 10,000 cycle rating for modules

3 year included warranty, warranty available for up to 10 years total

200–1000Vdc output range

LTE, LAN, 4G, Wifi (optional) connectivity



C6AM120

125kW max output (208Vac)

- Gas stations
- Hotels
- Fleets
- Rental Facilities
- Localized DCFC infrastructure
- Multifamily
- QSR/Fast Food
- Parking Lots

Adaptive Power Capability Table

Power Level (kW)	Max Current Draw (a)	Breaker Sizing (a)
125	375	450
100	300	375
75	225	250
62.5	175	200
50	150	175
40	120	150
30	90	125



C6AM200

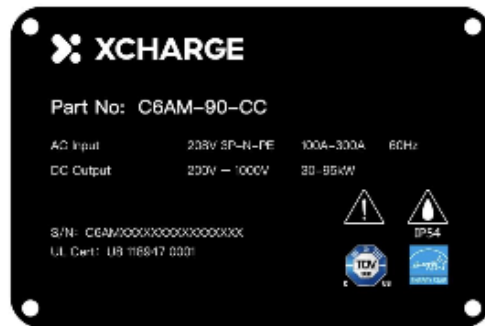
200kW max output (480Vac)



- Corridor/NEVI Sites
- Fleets
- Rental Facilities
- Public Charging Stations
- Parking Lots
- Charging Depots

Adaptive Power Capability Table

Power Level (kW)	Max Current Draw (a)	Breaker Sizing (a)
200	250	300
150	200	250
100	125	150
75	100	125
50	75	100
40	50	75



C7AM

XCHARGE C7 Hyper X Series Introduces a barrier free design enclosed with a single point of connection. Highly configurable the C7 is designed to create an easy-access public charging environment. Featuring an ultra-bright 21.5" LCD Screen and 13" touch screen controls, scalable 40kW power modules with support for CCS1, NACS and all other widely adopted connector types. OCPP 2.0.1 enabled with ISO15118 PnC w/ remote troubleshooting.

600a 480Vac 3-phase connection

Dynamic Load Balancing during simultaneous charging with Smart Scheduling

21.5-inch LCD display

Proprietary cable management makes even the heaviest charging cables easy to handle



Supports **OCPP1.6, OCPP2.0.1, ISO15118 PnC** function

Liquid cooled power modules provide **400kW** output with low noise

GridLink

GridLink by XCharge A versatile battery-integrated DC Fast Charger engineered for 208Vac or 480Vac configurations with maximum output up to 300kW. Powered by our self-developed battery modules and advanced liquid-cooled technology, GridLink ensures optimal thermal management and long battery life. Key features include Power Reserve Mode for backup power, dynamic peak shaving to reduce demand charges, and intelligent energy management for seamless grid or off-grid operation. Generate revenue through energy arbitrage, demand response programs, and renewable integration, while maintaining efficiency and reliability with our proprietary battery design. Advertise with a stunning 55-inch touch screen display, unlocking more possibility.



Photovoltaic Functionality

- External DC to DC power module with MPPT function
- Up to 60 kW photovoltaic input
- Save more energy and reduce more cost

Flexible combination with up to 2x215kWh liquid-cooled lithium-ion battery packs (self-developed)

Dynamic Load Balancing during simultaneous charging with Smart Scheduling

Supports OCPP1.6, OCPP2.0.1, ISO15118 PnC function

45a – 250a flexibility (480Vac)
91a–208a flexibility (208Vac)

Equipped with advanced safety features like real-time monitoring, fault detection, and automatic shutdown, ensuring protection and reliability

Proprietary cable management makes even the heaviest charging cables easy to handle

55-inch touchscreen LCD display

In-house developed liquid cooled modules – up to 120kW bidirectional power

Up to 300kW output with whisper silent noise levels



GridLink – Variable Input Capability



Input Power (kVA)	ACDC Output Power (kW)	Input Current @ 208V (A)	Breaker Size @ 208V (A)	Input Current @ 480V (A)	Breaker Size @ 480V (A)	Battery Augmentation (kW)	Maximum Charging Capacity (kW)
17	10	105 A	125 A	48 A	60 A	180 kW	190 kW
27	30	134 A	150 A	61 A	80 A	180 kW	200 kW
38	50	164 A	200 A	73 A	100 A	180 kW	210 kW
59	75	223 A	250 A	99 A	125 A	180 kW	230 kW
85	100	\	\	131 A	175 A	180 kW	255 kW
111	120	\	\	163 A	225 A	180 kW	280 kW
132		\	\	188 A	250 A	180 kW	300 kW



WHAT SETS XCHARGE APART

- **Battery-Integrated DCFC:** Offers faster deployment, lower demand charges, and better load balancing.
- **Modular Design:** Hardware supports power sharing, upgrades, and flexible deployment.
- **Smart Energy Management:** Integrates with solar, demand response, and off-peak charging strategies.



THANK
YOU!

GridLink

XCHARGE

XCHARGE

XCHARGE



AK Power Solutions



AK POWER SOLUTIONS
ACCELERATING ELECTRIFICATION

Breaking The Build

Innovation That Accelerates EV
Infrastructure

PRESENTED BY

Rena DeBerry



The Real Innovation Isn't Just the Vehicle

EV Tech is advancing - but
infrastructure must keep pace.

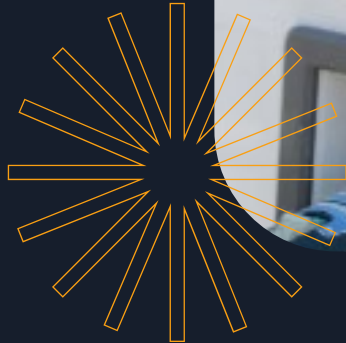
No Power = No Progress

Innovation starts with what powers
the system.



EV Demand is Rising But Confidence is Questionable

Charging Station is
unavailable.
Sorry for the
inconvenience.



The Real Challenge

**It's not how many
chargers we build.**

**It's how fast and
reliable we build them.**

Stick Build



Familiar, Easy, Limited

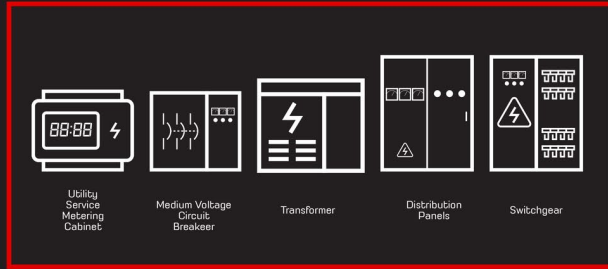
Skid Build



**One Unit, One Spec, One-Day Installation
Zero Surprises**

A GRID-READY SOLUTION, ALL IN ONE BOX

5 Pieces of Equipment in 1



**One unit. One delivery. One-day installation.
Let's build faster. Smarter. Together.**



Modular Scalable Resilient

Ready to challenge the status quo

15 Week Delivery

Industry Shortest Lead Time

A large, grey industrial power cabinet, likely a switchgear or transformer, stands on a concrete pad. The cabinet has several compartments with louvered doors and solid doors. On the left and right solid doors, there is a logo that says "K AX POWER SOLUTIONS" with a green "2V" symbol below it. A central compartment has a small window and a lock. In front of the cabinet, there are six yellow cylindrical bollards. The background shows a brown fence and some trees.

Energized IPM

Terawatt Infrastructure Rancho Dominguez, CA

STAY IN TOUCH



AK POWER SOLUTIONS
ACCELERATING ELECTRIFICATION

EMAIL

Rena.DeBerry@akpowers.com

LINKEDIN

[@akpowersolutions](https://www.linkedin.com/company/akpowersolutions)

WEBSITE

www.akpowers.com



AK POWER SOLUTIONS
ACCELERATING ELECTRIFICATION



Questions?